

WINDSIDE

WS-12 dimensions and technical info

Windside WS-12 technical info:

- Weight: ~4600 kg (approx).
- Swept area: 12 m²
- Generator: customised
- Wind load, side force to the middle point of the vane, Calculated 3,3 m up from the generator: 3000 kg
- Max 400 rpm
- Guaranteed at constant wind speed of 40 m/s
- Guaranteed at wind gusts of 60 m/s

Power production:

- 6-12MWh per year depending on location

Materials:

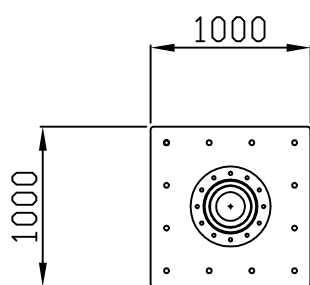
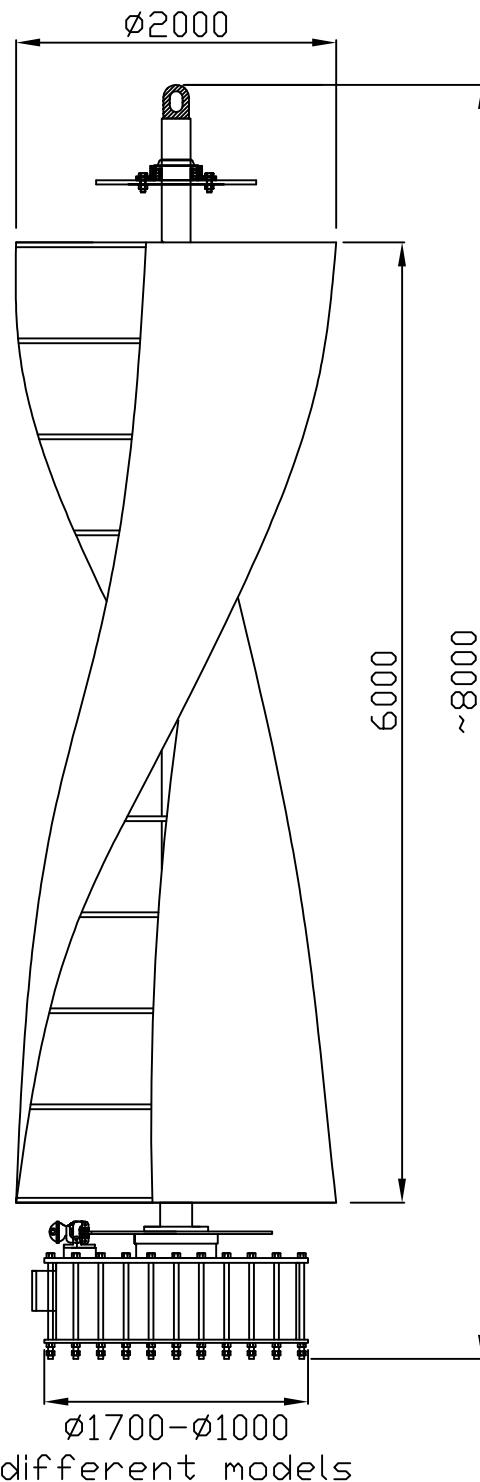
- Vanes: Aluminium
- Shaft: Steel
- Generator and Generator end plates: hot dip galvanized steel
- All bolts stainless steel or hot dip galvanized (A4, A2, Zn)

Assets of Windside wind turbines

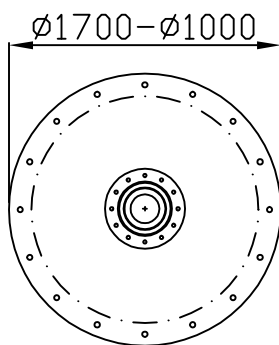
- No need to stop or secure during storms
- Produces max. amount of energy in storms
- No need to be turned to the wind direction
- Soundless; 0 dB, measured in 2 meters distance from the vane
- Stands snow, frost, heat and humidity
- Long lifespan
- Minimum need of maintenance, only lubrication
- Safe to people, animals and nature

Requirements:

- The turbine requires a chassis frame or a mast that the upper bearing can be attached to.

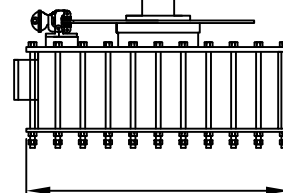


UPPER END



LOWER END

different models

 $\phi 1700 - \phi 1000$

different models



windside

OY WINDSIDE PRODUCTION Ltd

E-mail and internet
finland@windside.com
www.windside.com

Tel. +358-208-350 700
Fax +358-208-350 701
Mobile: +358-400-315 037

The manufacturer reserves
all rights to all modifications
without further notice.